

Locker parts

The home of UK locker parts and services



www.lockerparts.co.uk

Trade catalogue 2011

Britain's leading locker parts resource

Britain's expert locker parts company

Welcome to our new 2011 catalogue, widely regarded as the UK's number one resource for locker spares and accessories. We only specialise in lockers which means whatever you need you can be sure that our experts will always have the right solution and advice for you.

Locker parts is part of the Lockertek group; a company that has come from humble beginnings in 2008 to become the standard by which others follow when it comes to all things locker related.

Lockertek has won five major awards in the last two years including:

New Business of the Year, twice.

E- Business of the Year

Innovation Business of the Year, twice

Our price promise guarantee

If you find products featured within our catalogue cheaper anywhere else then let us know and we'll do our best to beat it.

Quantity discounts

We offer bulk discounts so please contact us if you wish to purchase any item in larger quantities.

Payment options

Credit or Debit cards, BACS, Cheque, Account (subject to status), Schools, NHS and Government have a pre-arranged account facility in place.



Visit us at

www.lockerparts.co.uk

or for new lockers and servicing visit,

www.lockertek.co.uk

How to order....



Call us on,
01582 505465



Fax us on,
01582 505465



Email us at
info@lockerparts.co.uk



By Post
6 Whitehaven, Luton, Bedfordshire, LU3 4BX

Contents

Cam Locks 3-5

Locker keys 6-7

Hasp locks 8-9

Coin locks 10-11

Combi locks 12-13

Locker doors 14-15

Pad locks 16-17

Wrist straps 18-19

Numbers/fobs 20-21

Card holders 22-23

Accessories 24-27

New Lockers 8-9

Information 8-9





Cam Locks

Locker cam locks

We stock the largest range of locker cam locks in the UK. If you don't see the lock you need here or have found your lock cheaper then please let us know.

Contact us on 01582 505465 or info@lockerparts.co.uk

V series universal cam lock

Part no.	Series	Price
V/UNI	V	£4.99



Choose from a straight or cranked cam for these locks

Helmsman cam locks

Part no.	Series	Price
HCL/3	31/33 series	£4.99
HCL/9	95/97 series	£4.99



Probe cam locks

Part no.	Series	Price
PCL36/38	36/38	£4.99



Link lockers cam locks

Part no.	Series	Price
LLCLCC	CC	£5.79
LL66/88	66/68	£4.99
LL95/97	95/97	£4.99



CFG cam locks

Part no.	Series	Price
CFG66/95	66/68 or 95/97	£5.99



QMP cam locks

Part no.	Series	Price
QCL/97	97 series	£4.99



Elite cam locks

Part no.	Series	Price
ECL/CC	CC	£6.49



Garran cam locks

Part no.	Series	Price
GCL/STD	Std G series	£4.99
GCL/NEW	New fat body	£4.99



Assa cam locks

Part no.	Series	Barrel length	Price
A8450	Various	19mm	£12.95
A10450	Various	29mm	£14.95



Bisley & Silverline cam locks

Part no.	Series	Price
BCL64 (Bisley)	64/65	£4.99
SCL95 (Silverline)	95/97	£4.99





Locker keys

Locker keys

Part no.	Locker	Series	Price
HSK	Helmsman	3/9	£2.49
LSK	Link	CC/6/9	£2.49
PSK	Probe	36/95	£2.49
GSK	Garran	G series	£2.49
ESK	Elite	CC/44	£2.49
BSK	Bisley	25 series	£2.49
QSK	QMP/Welco	64 & 97	£2.49



Master keys

Master keys are priced at £4.65 each.
The part numbers are as above but replace the S with an M.

Assa cam lock keys (8450 & 10450)

Part no.	Series	Price
ASCAMK	Various	from £7.99
ASCAMMK	Master key	from £13.25



Coin lock keys (L&F and ASSA)

Part no.	Series	Price
ASCOIK	Assa (various)	from £9.97
ASCOIMK	Assa master key	from £13.25
LFCOIK	L&F (various)	£6.79
LFCOIMK	L&F master key	£9.79



Please specify series when ordering.
Key blanks also available, please contact us for details.

Please contact us on 01582 505465 for Ojmar key prices



Hasp Locks

Hasp and staple locks

If you don't the lock you require here then please let us know and we'll locate it for you.

Helmsman hasp lock



Part no	Price
HHS4421	£4.99

Assa hasp lock



Part no	Price
ASHS/O	£7.49

Probe hasp lock



Part no	Price
PHS	£4.99

Garran hasp lock (wide body)



Part no	Price
GHS/WB	£4.99

Link Ronis hasp lock



Part no	Price
LLHS	£5.49

Probe pistol grip lock



Part no	Price
PPGH01	£5.49

Link pistol hasp lock



Part no	Price
LPGH01	£5.49

Elite hasp lock



Part no	Price
EHS	£4.99

Bisley hasp lock



Part no	Price
BHS	£4.99

Contact us on 01582 505465 or info@lockerparts.co.uk

Ojmar push-in hasp lock **NEW!!!**

Ojmar have just released this fantastic new hasp lock. It is designed for circular door piercings and offers unrivalled quality with excellent functionality. It also looks great.

Only £7.49 each





Coin locks

Coin locks

Assa locks

Part no.	Description	Price
AS290230COI	19mm barrel dry area	£29.99
AS290245COI	29mm barrel dry area	£32.99
AS290237COI	19mm barrel wet area	£37.99
AS290251COI	29mm barrel wet area	£39.99
ASCRB	Coin retain box	£29.99
ASECOID	E-lite coin lock , dry area	£14.95
ASECOW	E-lite coin lock, wet area	£18.95



All locks available in left or right hand hinge, add L or R to the end of the part number. When ordering please select coin type 20p, 50p, £1, Token or Euro.

Lowe and Fletcher locks

Part no.	Description	Price
LFCOI19D	19mm barrel dry area	£23.77
LFCOI29D	29mm barrel dry area	£25.47
LFCOI19W	19mm barrel wet area	£29.97
LFCOI29W	29mm barrel wet area	£32.44
LFCRB	Coin retain box	£29.99



All locks available in left or right hand hinge, add L or R to the end of the part number. When ordering please select coin type 20p, 50p, £1, Token or Euro.

Ojmar locks

Part no.	Description	Price
OJ-DRY-COI	24mm barrel dry area	£19.97
OJ-WET-COI	24mm barrel wet area	£25.27
OJ-WET-SECCOI	24mm wet area security barrel	£29.87
OJCRB	Coin retain box	£29.99



All locks available in left or right hand hinge, add L or R to the end of the part number. When ordering please select coin type 20p, 50p, £1, Token or Euro.



Combination locks

Combination locks

Digital combination lock



This standalone battery operated lock allows the user immediate and simple keypad access without the need for a key. Users have the flexibility to set and change their personal entry code whilst a preset master code ensures that supervisor access is always available.

This innovative product can be programmed for dedicated single-user or multi-user "open access" mode.

The lock is suitable for a wide range of applications including wet areas due to its IP54 certification.

Part no	Price
DGCL	£27.99 ea

Dial combination lock



Designed for use on an extensive range of metal and wooden enclosures, this intuitive mechanical code entry lock has a mechanical key override and the ability for the end user to set and change their own personal entry code. It is supplied with a choice of cams and can be set to left or right hand mode by the flick of a switch on the rear Secure 4 digit user code on the lock.

- Code changeable by user
- Mechanical key override
- Intuitive to use
- Left & right hand switchable
- Comprehensive cam range

Part no	Price
DLCL	£19.97

Master combination door lock

- Designed for standard lift handle lockers with hinges on the left
- Convenient, automatic locking
- Secure, easy to dial 3-digit combination
- Longer useful life with 5 different pre-set combinations; easily changed to maintain security
- End user registration and control charts provided to secure and simplify administration



Part no	Price
MDCL1	£24.97

Melo digital combination lock **NEW!!**

This fantastic new lock offers total flexibility and is available in Keypad, RFID or Swipe card formats. It can be integrated into existing systems and is IP65 rated for wet or dry area usage.

Please contact us for best prices





Locker doors

Locker doors

Wood and laminate doors also available, please contact us for details.

Probe steel locker doors (includes locks and card holder)

305mm wide	Code	Cost	380mm wide	Code	Cost	460mm wide	Code	Price
Single door	P1305	£26.95	Single door	P1380	£28.52	Single door	P1460	£31.34
2 door	P2305	£20.68	2 door	P2380	£22.25	2 door	P2460	£23.18
3 door	P3305	£19.74	3 door	P3380	£20.79	3 door	P3460	£22.56
4 door	P4305	£19.43	4 door	P4380	£19.43	4 door	P4460	£20.37
5 door	P5305	£17.80	5 door	P5380	£18.87	5 door	P5460	£19.26
6 door	P6305	£17.24	6 door	P6380	£17.86	6 door	P6460	£18.80

Link Locker steel doors

Rhino and CFG doors also available.

305mm wide	Code	Cost	380mm wide	Code	Cost	460mm wide	Code	Price
Single door	P1305	£22.95	Single door	P1380	£24.52	Single door	P1460	£27.34
2 door	P2305	£16.68	2 door	P2380	£18.25	2 door	P2460	£19.18
3 door	P3305	£15.74	3 door	P3380	£16.79	3 door	P3460	£18.56
4 door	P4305	£15.43	4 door	P4380	£15.43	4 door	P4460	£16.37
5 door	P5305	£13.80	5 door	P5380	£14.87	5 door	P5460	£15.26
6 door	P6305	£13.24	6 door	P6380	£13.86	6 door	P6460	£14.80

Helmsman locker doors (specify old or new type)

300mm wide	Code	Cost	380mm wide	Code	Price	450mm wide	Code	Cost
Single door	H1300	£16.66	Single door	H1380	£17.31	Single door	H1450	£18.05
2 door	H2300	£14.71	2 door	H2380	£15.00	2 door	H2450	£16.01
3 door	H3300	£13.41	3 door	H3380	£14.03	3 door	H3450	£15.02
4 door	H4300	£12.10	4 door	H4380	£13.41	4 door	H4450	£14.06
5 door	H5300	£12.46	5 door	H5380	£13.11	5 door	N/A	N/A
6 door	H6300	£10.81	6 door	H6380	£12.46	6 door	N/A	N/A

Elite locker doors

300mm wide	Code	Price	450mm wide	Code	Price
Single door	E1300	£18.75	Single door	E1300	£23.05
2 door	E2300	£13.25	2 door	E2300	£16.00
3 door	E3300	£12.00	3 door	E3300	£14.75
4 door	E4300	£10.25	4 door	E4300	£12.00
5 door	E5300	£10.50	5 door	N/A	N/A
6 door	E6300	£10.00	6 door	N/A	N/A

Garran, Bisley and Silverline don't offer replacement locker doors within their range. If you require doors for wood or laminate lockers please contact us for prices.



Padlocks

Padlocks

Contact us on 01582 505465 or info@lockerparts.co.uk

Standard padlock Yale branded



- Hardened steel shackles
- Self latching and double locking
- Optimum size for locker use
- Suitable for outside use
- Supplied with 3 keys per lock



Only £3.99 each

Combination padlock

This brass padlock with 6mm steel hasp perfectly complements our V series latch lock. It is also available as a stand-alone product suitable for a broad range of customer applications. The lock operates with a 4 digit combination which is code changeable by the user to their desired entry code.



Only £5.49 each

Dial combination padlock

The dial combination padlock offers a higher number of possible combinations using a 3 digit code with 64,000 possible combinations. Each lock is allocated it's own combination which is non-resettable. Every lock then also has a unique serial number that allows you to track the padlock to it's own combination. Ideal for schools, gyms and where large numbers of lockers are secured.



Only £5.49 each



Wrist straps

Wrist straps

- Fully adjustable for all wrist sizes
- To suite all popular key types.
- Tough and durable Key is enclosed whilst wearing Numbered or unnumbered
- (numbers don't have to be sequential)
- No metal buckle to cause injury

Part no: PK1



Un-numbered £3.49
Numbered £3.79

- Fully adjustable for all wrist sizes
- To suite all popular key types.
- Tough and durable Key is enclosed whilst wearing Numbered or unnumbered
- (numbers don't have to be sequential)
- No metal buckle to cause injury

Part no: PK2



Un-numbered £3.49
Numbered £3.79

- Fully adjustable for all wrist sizes
- To suite all popular key types.
- Tough and durable Key is enclosed whilst wearing Numbered or unnumbered
- (numbers don't have to be sequential)
- No metal buckle to cause injury

Part no: PK4



Un-numbered £3.49
Numbered £3.79

Rivet pliers

Our rivet pliers are the perfect tool for fixing keys to your wrist straps. These easy to use pliers are both extremely robust as excellent value.

Only £13.97 each

Part no: RP1





Numbers & Fobs

Locker numbers & fobs

Self adhesive locker numbers & key fobs

Our locker number plates are fantastic quality and offer the largest range of colours in the industry. You can choose from circular or square designs and from two sizes to suit your needs.

Locker numbers

PND27	27mm	£1.09 each
PND33	33 mm	£1.19 each
PND38	38mm	£1.29 each



Key fobs with metal split ring

PKF27	27mm	£1.39 each
PKF33	33 mm	£1.49 each
PKF38	38mm	£1.59 each



When ordering please inform us of your colour choice and either square or circular.



Metal locker numbers & key fobs

Our range of quality metal number plates offer an upmarket feel at outstanding prices. You can choose from brass, bushed metal or chrome.

Key fobs from
£1.79

Numbers from
£1.49



Braille locker numbers & key fobs

Our range of Braille number plates and key fobs offer excellent quality at industry leading prices.

These items are factory order and can take up to 20 working days to come into stock.

Key fobs from
£3.49

Numbers from
£2.99

Personalised key fobs/numbers

If you require a shape or size not featured then our bespoke range is tailored to your needs. We can make whatever you require and you'll be surprised at our prices too.





Card holders

Card holders

At locker parts we stock a wide range of card holders and number plates for all locker types. We can also make bespoke plates in designs to suit your requirements. If you don't see the plate you need here then please contact us.

Link lockers card holder range

Type	Part no	Box qty	Price
A	MB01	10	£13.90
B	LC01	10	£13.90
C	OL01	10	£13.90
D	OL02	10	£13.90



Type A



Type B



Type C



Type D

Probe oval card holders

Part no	Qty per box	Price
PCH	10	£13.90



If you can't see what you need then let us know. The chances are we already have it....

Helmsman type card holder

Part no	Qty per box	Price
HCH	10	£13.90



QMP type card holder

Part no	Qty per box	Price
QCH	10	£13.90



Type	Part no	Qty per box	Price each
Garran	GCH	10	£13.90
Elite	ECH	10	£13.90





Accessories

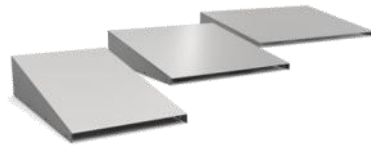
Accessories

Contact us on 01582 505465 or info@lockerparts.co.uk

Sloping tops

Sloping tops are the perfect way to stop personal items and rubbish being left on top of your lockers. We stock a large range of these which can be retrofitted to most UK manufactured lockers. Please contact us for details and availability.

Prices start from **£9.97** each



Locker stands

If your lockers are sat directly on a mopped floor then you may notice that over time the base will become rusty and unsightly. To prevent this and to help with cleanliness and hygiene then you need locker stands.

They are available in different sizes and the rear legs can also be inset to avoid skirting boards etc.

Prices start from **£19.50** each. Please contact us for more details



Locker shelves

Locker shelves are sheets of steel that form the compartment shelves and the top of your lockers.

Over time these can become dented and in some cases can come away completely. We supply replacement shelves for all types of UK manufactured lockers.

What's more prices start from only **£4.99** each.



Accessories

Contact us on 01582 505465 or info@lockerparts.co.uk

Locker tokens

Type	Qty	Price
Assa	20	£19.97
L&F	20	£19.97
Ojmar	20	£18.72



Fishtail pins

Part No	Qty	Price
FTP01	20	£19.80



Brass lock nuts

Part No	Manufacturer	Qty	Price
LBN01	L&F	10	£9.49
ABN01	Assa	10	£13.97
RBN01	Ronis	20	£9.49



Horseshoe clips

Part No	Manufacturer	Qty	Price
LFHSC	L&F	10	£7.99
LFGHSC	L&F for Garran	10	£7.99



Plastic key fobs

Part No	Qty	Price
PKF01	100	£9.95



Rubber wrist bands

Part No	Qty	Price
HSC100	100	£9.47



Nesting bolts

Part No	Qty	Price
NB01	100	£19.97



Locker rivets

Part No	Qty	Price
LR100	100	£12.49



Hinges

We stock a wide range of hinges for both laminate and wood locker doors.

Please contact us for details.



Locker cams

Assa and Ojmar cams also available please contact us for prices

Type one cam

45mm cam with a 10mm crank



Box of 10 £7.99

Type two cam

60mm straight cam (also available with end lip)



Box of 10 £7.99

Type three cam

45mm straight cam (also available with end lip)



Box of 10 £7.99

Type four cam

57mm cam with a 15mm crank and hook



Box of 10 £7.99

Type five cam

60mm cam with a 5mm crank
(Also available with end hook)



Box of 10 £7.99

Assa and Ojmar cams also available please contact us for prices

Contact us on 01582 505465 or info@lockerparts.co.uk

The best prices guaranteed

New lockers



The Versatek range

The Versatek range of lockers offer industry leading build quality at prices normally associated with budget brands. These lockers are designed to be tough enough for the education market and are perfect for any company looking for a long lasting solution for their storage needs. Contact us on

01582 505465



1 door



2 door



3 door



4 door



5 door



6 door

Door colours



Shark grey



Coral sea



Summer blue



Midnight blue



Galaxy black



Mid day sun



Navy grey



Tomato



Forrest green



China white

Standard Lockers

1775mm high x 300mm wide x 300mm deep

Doors	Nest 1	Nest 2	Nest 3
1	£56.06	£104.30	£152.92
2	£62.18	£116.82	£171.07
3	£67.47	£129.40	£186.41
4	£71.95	£136.22	£201.01
5	£78.21	£148.35	£218.82
6	£85.35	£163.88	£242.44

1775mm high x 300mm wide x 450mm deep

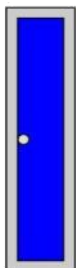
Doors	Nest 1	Nest 2	Nest 3
1	£59.23	£108.66	£158.85
2	£65.40	£121.49	£177.60
3	£71.09	£136.22	£196.06
4	£74.77	£140.57	£206.38
5	£81.49	£153.63	£226.54
6	£85.00	£162.00	£246.94

1775mm high x 450mm wide x 450mm deep

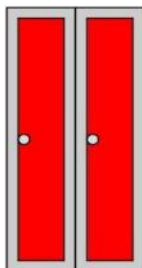
Doors	Nest 1	Nest 2	Nest 3
1	£64.53	£120.56	£176.24
2	£72.83	£135.97	N/A
3	£79.45	£151.97	N/A
4	£83.09	£157.23	N/A
5	£90.71	£172.23	N/A
6	£99.28	£189.49	N/A

Locker nesting explained

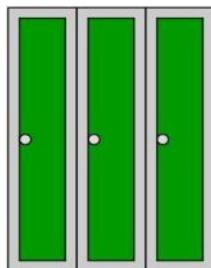
You may choose to have your lockers manufactured in blocks of two or three rather than singly, to aid stability. As this method uses less steel it will make your lockers cheaper too.



Nest of 1



Nest of 2



Nest of 3

Lock options

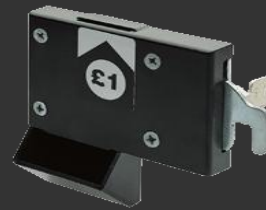
Prices are per door



Cam locks no extra cost



Hasp & staple for padlocks
no extra cost



Coin locks add £25



Combination locks add £27.00



Digital locks add £27.00

Information

Know your lockers

If you are unsure of what lockers you have, then just follow these easy steps below to help us identify them, or call a member of our team who can assist you on 01582 505465. You can always take a photo and send it to us at sales@lockertek.co.uk

- 1) Do your lockers have any branding or logos on them?
- 2) Most lockers have a uniquely shaped plastic plate around the lock barrel - what shape is it?
- 3) What do the vents look like at the top and bottom of the locker?

Carriage charges

We take a common sense approach to delivery charges and as such small parcels such as keys or a few locks will be sent by Royal Mail at our standard prices below. Larger parcels are sent by courier.

Keys

1-5	£1.50
6-14	£1.95
15-49	£3.95
50-99	£5.95
100+	£9.95

Locks

1-3	£2.75
4-9	£4.95
10-49	£9.95
50-100	£15.00

Carriage for larger, heavier goods or items from multiple manufacturers is calculated at the time of order.

Lead times

We normally despatch locker keys within 24 hours of your order if ordered Mon-Thurs before 2pm. All other items are normally despatched within 7 days (excluding doors, sloping tops and locker shelves which are manufactured to order).

Locker doors, shelves and sloping tops normally take 2-3 weeks from date of purchase as these are made to order. At busy times such as school holidays these lead times can vary but you will be informed of current lead times when ordering. Delivery details will be confirmed at time of order.

Cancellations

Cancellations are subject to a cancellation fee. This fee will vary depending on if stock items or made to manufacture. You will be advised of this on cancellation.

Returns

We work hard to ensure that your goods arrive with you in perfect condition. However occasionally, goods can arrive damaged or faulty. Damaged goods must be signed for as "damaged" on the delivery note or rejected on delivery and we must be notified within 24 hours by either calling us on 01582 505465 or e-mailing sales@lockertek.co.uk. We will then advise you of the correct returns procedure. If the goods have been incorrectly ordered by yourselves please call us to discuss this. Your case will be dealt with on an individual basis as many items are manufactured to order. If returns are agreed then this will be subject to a handling fee and they must be returned in their original packaging and in perfect condition.

Payment

We offer a credit facility to customers subject to acceptance. New accounts can be opened by completing an account request form, available by calling 01582 505465 or e-mailing sales@lockertek.co.uk. All invoices must be paid within 30 days of invoice. Non-account customer's orders are processed on a pro-forma basis and cleared payment must be received before manufacture. We accept cheques and BACS as methods of payment.

Catalogue prices

The prices within this catalogue are correct as of September 2009 and are subject to VAT at the current rate. These prices are subject to change without notice.

Lockertek Product Range

This brochure represents our most popular, best selling items however does not feature our complete range. If you cannot find what you are looking for then just simply give us a call on 01582 505465. We specialise only in lockers and will always find the right solution for you.

A copy of our full terms and conditions are available on request or can be found at www.lockertek.co.uk